



Sailing Wanganui

Delivering Sailing Opportunities for All

70 Gilbert Street
Wanganui

www.sailingwanganui.co.nz

2021-2022

Index

Mission Statement	3
Club Officers	4
2020-2021 Season Programme	5
2020-2021 Season results	8
Programme Clarifications	12
Club Management Structure	13
Sailing Instructions	14
Event Modification Notice	17
Championship & Handicap	18
Safety	19
Club Constitution	20



Mission Statement

Sailing Wanganui will develop and secure partnerships and implement financial and reporting structures that ensure long term financial security of the organisation. Reserves will be established and utilised to ensure the ongoing supply of plant to meet the Club's development needs.

Sailing Wanganui will be recognised as the organisation in the region for the provision of sailing opportunities that allows any individual to reach their potential.

Sailing Wanganui, through its staff, volunteers and members, will work with pride, professionalism, enthusiasm and innovation to become the recognised leader of sailing in Wanganui. Staff development will recognise and build skills to ensure that they are leaders in their respective fields of work.

Sailing Wanganui will build participation through the provision of quality sailing opportunities and events and by connecting with new customer groups. Sailing Wanganui will develop a culture of "fun for everyone". The Club will be recognised as the leading provider of innovative and quality events, facilities and promotions for the development of sailing in the region. Acting as a centre of excellence for the development of sailing in Wanganui it will also be recognised as the leading advocate of the development of sailing in the region.



Club Officers

Patron	Ken Bradshaw	Ph: 345 3472
Commodore	Josh McDonnell	Ph: 027 9253379
Vice Commodore	Open for nomination's	
Club Captain	Lindsay Stephenson	Ph: 027 498 6309
Secretary:	Lisa McDonnell	secretary@sailingwanganui.co.nz
Treasurer:	Bob Davies	021 803 744 treasurer@sailingwanganui.co.nz
General Committee:	Andrew Montgomery	Ph: 027 288 5545
	Bruce & Leo Jones	Ph: 027 599 9994
	Luke & Caleb Squire	Paul Squire
	Paul Squire	Ph: 021 778473
	Kerry Check	
	Shawn Thomas	Ph: 027 2488 037
Sailing Committee:	Lindsay Stephenson	(Club Captain)
	Bruce Jones	Ph: 027 599 9994
	Lisa McDonnell	Ph: 027 347 8698
	Shawn Thomas	Ph: 027 248 8037
Results Co-Ordinator:	Shawn Thomas	Ph: 027 248 8037
Strategic Committee:	Stewart Thomas	
Coaching Coordinator:	Bob Davies	Ph: 345 7155/021 803 744
Club Auditor	Ken Roddick	
Club Solicitor	J T Refoy-Butler	

WANGANUI SAILING PROGRAMME 2021/2022

Date	Tide	Height	Start time	Event	Other Events
SEPTEMBER					
Sunday 5th			10:00	Working Bee BBQ lunch, rescue boat training/refresher	Laser Regetta-Taipa
Arrive 90 minutes before start time, so we know how many boats for safety reasons.					
Buoyancy vests must be worn at all times.					
Saturday 11th	1238	3	1115	Shakedown Series 1-2-3	
Sunday 12th	1317	2.8	1200	Shakedown Series 4-5-6	
Sat 25th 1800 Dinner at Wanganui East Club					
Saturday 25th	1222	2.8	1100	Club in use for Waka Ama- No Sailing	Day light savings starts
Sunday 26th	1350	2.6	1230	Walker and Thomas Sunday Series 1-2-3	opening flag raising 1100 RS Feva - Kerikeri
OCTOBER					
Saturday 2nd			1000	Learn to sail - Pauri	Youth champs-Laser,29er,Macra
Saturday 9th	1237	3.1	1130	Saturday Series 1-2-3/ Learn to sail at club	RS FEVA -Manly
Sunday 10th	1314	3	1200	Walker and Thomas Sunday Series 4-5-6	16-17th Rotoura Sprint Series RS Feva Murrays Bay

Date	Tide	Height	Start time	Event	Other Events
Saturday 23rd	1223	2.8		Labour weekend	RS Feva Murrays Bay
Sunday 24th	1253	2.8		Lake Taupo cruise /Turangi/Motuoaapa	
Monday 25th	1322	2.6			
Saturday 30th			1000	Learn to sail - Pauri	
NOVEMBER					
Saturday 6th	1137	3.1	1030	Studholme cup Hcap/Champ/Hcap	Opti North Islands - Taupo
Sunday 7th	1216	3.1	1100	Studholme cup Champ/Hcap/Champ	
Saturday 13th			1000	Learn to sail - Pauri	Fri 12th 1800 St Johns Club PT's Ngartoto regatta Finn NI - New Plymouth
Saturday 20th	1125	2.8	1030	Saturday Series 4-5-6/ Learn to sail at club	
Sunday 21st	1158	2.8	1030	Walker and Thomas Sunday Series 7-8-9	RS Feva - Birkenhead
Saturday 27th			1000	Learn to sail - Pauri	Laser and PT NI champs Napier
DECEMBER					
Saturday 4th	1036	3	930	Saturday Series 7-8-9/ Learn to sail at club	
Sunday 5th	1119	3	1000	Walker and Thomas Sunday Series 10-11-12	RS Feva-Torbay 11-12th PT's Howick

Date	Tide	Height	Start time	Event	Other Events
Saturday 18th	1027	2.6	915	Mark Foy	11-12th Hansa303 NI's- Waitara
Sunday 5th	1104	2.7	945	Mark Foy	
JANUARY					
Saturday 22nd	1346	2.8	1230	Saturday Series 10-11-12	3-7 PT Nationals New Plymouth
Sunday 23rd	1426	2.7	1300	Walker and Thomas Sunday Series 13-14-15	20-24th Laser Nationals-Picton
Monday 24th				Wellington Anniversary Weekend	29-30th Sail GP- Lyttleton
FEBRUARY					
Saturday 5th	1334	2.9	1200	Saturday Series 13-14-15	Noelx 25 Nationals
Sunday 6th	1412	2.8	1245	Walker and Thomas Sunday Series 16-17-18	
Monday 7th				Waitangi Day	12-13th RS Feva-Kohimarama/New Plymouth Regatta
Saturday 19th	1246	3	11:00	Saturday Series 16-17-18	Waitara Regatta
Sunday 20th	1321	3	1130	Walker and Thomas Sunday Series 19-20-21	
MARCH					
Saturday 5th	1231	3.1	1100	Wanganui Regatta	Dinner at the dogs Friday 1730
Sunday 6th	1305	3	1130	Wanganui Regatta	BQQ at the club Saturday
26-27 PT's Turangi TBC/25-27Open skiffs Naval point					

Date	Tide	Height	Start time	Event	Other Events
Saturday 19th	1146	3.1	1030	Studholme cup	11-13th Hasa303 & Liberty Nationals-Ngaroto
Sunday 20th	12:24	3.1	1100	Studholme cup	17-20 H16 Nationals Manukau
Wgtn centreboard Regatta +PT's					
APRIL					
Friday 1st	1052	3		Easter- No Sailing	
Saturday 2nd	1128	3.1		Easter-No Sailing	Daylight savings ends
Sunday 3rd	1103	3		Easter-No Sailing	RS Feva Nationals - Maraetai
Monday 4th	1136	2.9		Easter- No Sailing	
Saturday 16th	942	3	9:00	Novelty Races/Poker run	
Sunday 17th	1018	3.1	9:00	Walker and Thomas Sunday Series 22-23-24	Closing day BQQ
JUNE					
June 18th			1800	Prizegiving	Pot luck dinner and dessert
JULY					
July 31st			1400	AGM	



Final Results Season 2020 – 2021

Mark Foy

Not sailed

Walker & Thomas Sunday Series Handicap

Open C

1st Ian Perry-Lazer Handicap Cup

2nd Eddie Dewhirst

3rd Peter Reay

PT's

1st Phillip Patterson – J Rose Cup

2nd Grant Allan

3rd Phill Tetecin

Trailer Yachts

1st Kerry Check - Kutu Cup

Walker & Thomas Sunday Series Championship

Open C

1st Caleb Squire, Lazer Championship Cup

2nd Luke Squire

3rd Ken Bradshaw

1st- Caleb Squire, Radial Rig- , EM Silk Cup

PT's

1st Stewart Thomas, Scott Memorial cup

2nd Josh McDonnell

3rd Lisa McDonnell

Trailer Yachts

1st Linzi Stevenson, Heather Russell Trophy

2nd Bob Davies

3rd Kerry Check

Starling Class Challenge

Not sailed

Liquorland Studholme Cup

1st Stewart Thomas, Studholme Challenge Cup

2nd Josh McDonnell

3rd Phil Tetzlaff

Champion of the River

1st Stewart Thomas, Drew's Cup

2nd Josh McDonnell

3rd Lisa McDonnell

Nominated Trophies

'Know Your Rules" – **Luke Squire**

'Most Improved – **Leo Jones**

'Kendrick Trophy" – Ambassador of the Club – **Bob Davies**

"Floyd Trophy" – Services to the Club – **Bob Davies**

'WSC Cup For Hands" – Crew – **Leo Jones**

'W E Buller Memorial" – Champion Female Skipper – **Lisa**

McDonnell

'J Rumney Cup" – Juniors – **Leo Jones**

'Hinemoa Cup" – Most Promising Female – **Lisa McDonnell**

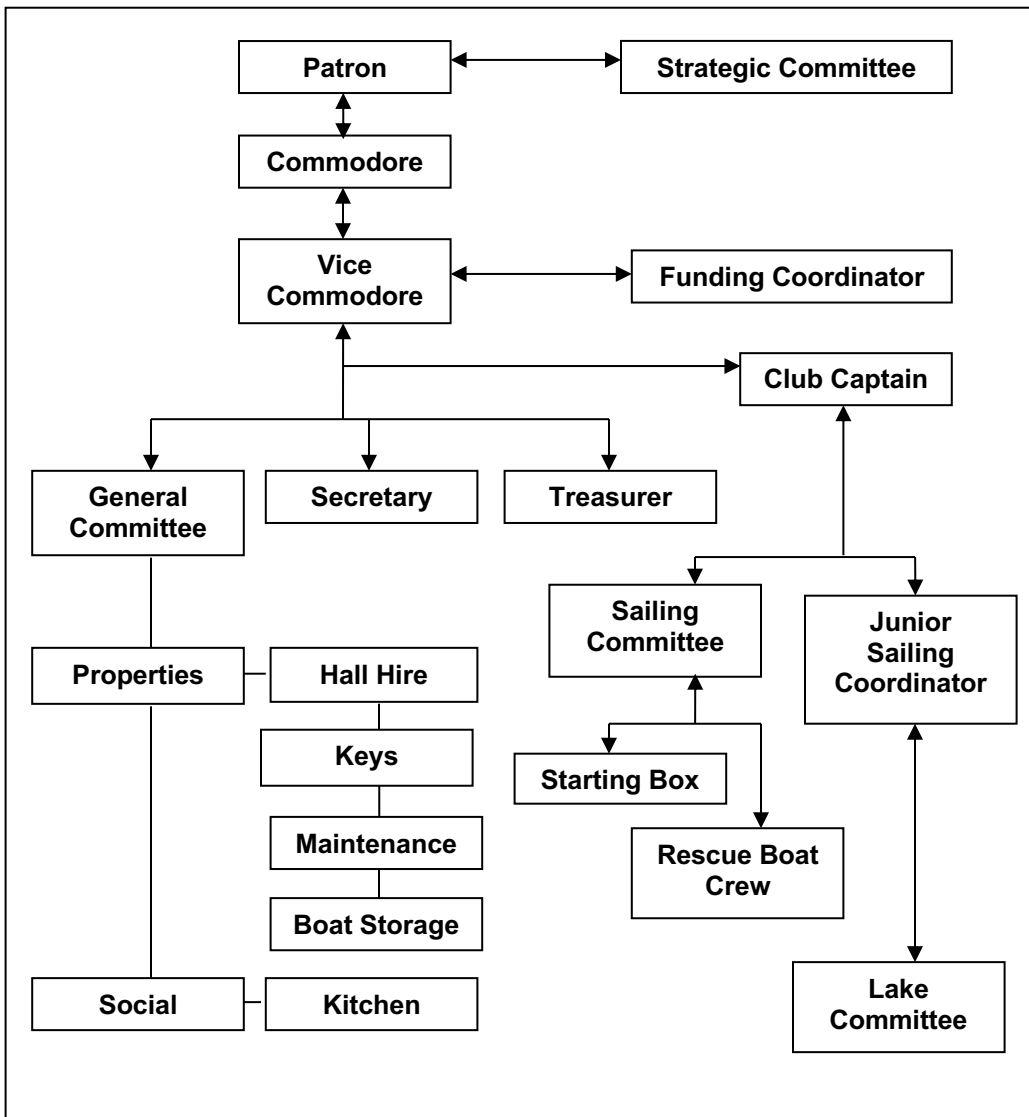


Programme Clarifications

All Western Districts Yachting Association Regattas and open to all Current Membership on payment of the prescribed entry fee. Club races are open to all financial members of a Yacht/Sailing Club as at 31 October or new members on payment of the required Subscription.

1. The Sunday Series will be both Championship and Handicap Series.
2. Saturday and Twilight series will be raced using Boat Ratings.
3. The Studholm Cup will be mixed Championship Ratings and Club Handicaps
4. For overall Championship/Handicap results, will depend on total number of races sailed refer to sailing instructions 16.2
5. In the event of a tie for any place the procedure described in Appendix A paragraph A8 of the Yacht Race rules will be used.
6. In determining overall results, a Championship place will preclude a handicap place.
7. Races may be held at sea, at the discretion of the sailing committee, providing a minimum fleet of five boats are entered and available to start for that individual race, and that safety requirements for all boats have been met. Any boat not meeting the safety requirements will be ineligible to compete.
8. The Competitor's individual average points will be allocated to any person not starting in a Club race due to attendance at a nationally recognised or advertised Western Districts event. Please advise Box officials.
9. Competitors requested by the Sailing Committee to act as Race Officials shall be allocated their average points for the series, for that race.

Club Management Structure



Sailing Instructions

The Organizing Authority is WANGANUI SAILING CLUB Inc.

1.0 Rules

- 1.1 All races will be governed by the 'rules' as defined in the Racing Rules of Sailing.
- 1.2 The YNZ Safety Regulations are deemed to be part of the Sailing Instructions
- 1.3 In an event, race or series of races that Class Ratings or Handicaps are applied to determine final results the onus is on participants to ensure that the boat they have entered complies with Class rules for that type of boat.

2.0 Notices to Competitors

- 2.1 Notices to competitors will be posted on the official notice board in the clubhouse.

3.0 Changes to Sailing Instructions

- 3.1 Any change to the Sailing Instructions will be posted at least 55 minutes prior to the warning signal of the race it will take effect, except that any change to the schedule of races will be posted on the scheduled Club day before it will take effect.
- 3.2 Studholm Cup. This Cup is raced for by the whole fleet over two weekends one around the start of season and the other at the end of season. **All Races to Count.** Races sailed on Saturday(s), two races are on handicap and one race is championship and Sundays one club handicap race and two championship the results aggregated.

- 3.4 Champion of the river is sailed for by the same weekend as Studholme Cup but is only Championship races. **All Races Count.**

4.0 Life Jackets

- 4.1 All crew members shall wear lifejackets or other personal buoyancy. Wetsuits & dry suits are not adequate personal buoyancy. This changes rule 40. It is advised by sailing Wanganui to wear your lifejacket over top of your spray jacket for ease of rescue.

5.0 Schedule of Races

- 5.1 Racing is scheduled as per the published race programme.

6.0 Class Flags

- 6.1 Will be the number pennant corresponding to the order of start for each day.

7.0 Signing on and off when finished

- 7.1 All skippers must sign on prior to the start of the first race each day. The sign on sheets will be placed in the clubhouse near the course board. If not signed on will result in a **DNC**

7.2 All Skippers must sign off when finished racing. Skippers not intending to start the second race of the day, or skippers who retire from a race shall notify the race committee in the start box and sign off. The sign off board will be located near the showers on the ground floor of the Clubhouse.

8.0 Racing Area

8.1 All courses will be sailed on lower reaches of the Wanganui River or as otherwise advertised in the published race programme.

9.0 The Courses

9.1 The courses will be illustrated at least 30 minutes before each race on the course board. Races to be sailed 'Back to Back' will be indicated on the course board.

10.0 Marks

10.1 All course marks will be orange buoys.

11.0 Allowance of Average Points

You must be a crew member on Rescue boat or Committee Boat if your fleet is racing you are entitled to average points, if you go away to any regatta and your fleet races as long as you notify the Results Co-ordinator BEFORE the weekend to be sailed you are entitled to average points.

12.0 Committee Boat Starting procedure

12.1 Boat Starts will be in accordance with YNZ rules xxx

13.0 Shortened Course for club house start/finish

13.1 The flying of code flag 'S' on or near a rounding mark, means the race has been shortened. Boats shall round this mark and proceed directly to the finish line. (Boats shall sail through the finish line from the direction of this mark) This changes race signal S.

13.2 The flying of a class flag(s) with code flag 'S' means instruction 12.1 only applies to that/ those class(es)

13.3 Shortened Course for Boat Starting/Finish

This will be in accordance with YNZ rules xxx

15.0 Committee Boat Finishing procedure

- 15.1 The finishing line will be Committee Boat and the finishing mark.
- 15.2 All boats must finish between the Committee Boat and the outer finish mark.
- 15.3 Yachts must not re-cross the finishing line in the direction of the course after finishing and clearing the finish line.

16.0 Time Limits

- 16.1 Boats still racing but failing to finish within 15 minutes of the first boat in her class may be given a finishing position based on their place at the last mark they rounded, their score will be greater than any boat who rounded further marks or who finished .OR the boat may be scored “**Did Not Finish**” This changes rules 35 and A4.
- 16.2 A boat starting more than **Four Minutes** after the starting signal will be scored “**DID NOT START**” without a hearing. This changes rule A4

17.0 Protests and Requests for Redress

- 17.1 Protest forms are available from the race office. Protests shall be delivered there within the protest time limit.
- 17.2 For each class, the protest time limit is 30 minutes. The protest time shall start at the end of the days racing and shall be signalled by the flying of code flag B from the clubhouse. The same protest time applies to all protest by the race committee and to requests for redress. This changes rules 61.3 and 62.2
- 17.3 Notices will be posted within 30 minutes of the protest time limit to inform competitors of the date and time of hearings in which they are parties or named as witnesses
- 17.4 The Protest committee may award a time penalty at any protest hearing in place of disqualification.

18.0 Scoring

- 18.1 The Low Point scoring system of Appendix A shall apply.
- 18.2 For Sunday & Saturday Series Racing 80% of the total races sailed shall count.

19.0 Disclaimer of Liability

- 19.1 Competitors participate in any event entirely at their own risk. See rule 4, Decision to Race. The organising authority will not accept any liability for material damage or personal injury, or death sustained in conjunction with or prior to, during, or after any event.



Event Modification Notices

The following additions and variations to Event and Race Management will be applied when a race or event of any type is conducted, either at the club or at any other venue, which would normally call for an alteration to the published Sailing Instructions. They shall only be applied if the Yachting New Zealand Racing Rules of Sailing and Sailing Vanganui Sailing Instructions are either silent or state procedures that are inappropriate for the event and/or location, and in this case are deemed to be part of the Sailing Instructions.

Paragraphs 3, 6, 7, 8 and 9 from the local Sailing Instructions may be deleted.

Marks (This replaces paragraph 10 of the local Sailing Instructions)

Marks may be of any colour and type and may be replaced by a structure or landmark when appropriate. The type of mark shall be advised to all participants a reasonable period before the first race of any event. This notification by the Principle Race Officer may be verbal, and the onus is on all participants to ensure understanding of the course layout to be used.

The Start

The start boat shall be the assigned rescue craft on the day, and will run a start sequence in accordance with yachting NZ Rules, using the flag system.

Mixed Class Racing

In the event of a protest or blatant disregard of the Sailing Instruction 1.3 requirement the Race Committee, without needing recourse to the protest committee, may make any adjustment to the rating or handicap deemed necessary. In the event of a dispute the onus is on the offending boat owner or representative to prove compliance with Class Measurement Rules.

Championship & Handicap

Championship Rating System (September 2014)

The following are the class ratings applicable to boats being sailed in races controlled by Sailing Wanganui.

470	.960	Optimist	.570
Noelex 22	.806	P Class	.850
Byte	.850	Paper Tiger	1.110
Davidson 20	.686	Splash	.800
Europe	.850	Starling	.750
Farr 5000	.690	Sunburst	.750
Farr 6000	.750	Sunburst (no Spin)	.730
Hartley 16	.720	Topper	.740
Int Moth Wings	.860	RS Feva	.790
Laser	.870	Heron	.690
Laser Radial	.860	NZ Moth	.870
Laser 4.7	.790	Kestral 18	.700
Micron 3	.780	Tasman 20	.747

To calculate corrected time, use the following formula:

'Elapsed Time' x 'Rating' = 'Corrected Time'.

Handicap Rating System

Each Skipper and boat combination are allocated a rating for the purposes of calculating handicap systems. This rating is a maximum of 1 (equal to 0% using percentages) down to whatever is necessary. All calculations are made (using the above formula) on the boats elapsed time with no adjustments made for the type of boat.

Using the elapsed time for this calculation evens out any local performance variations or boats being sailed better or worse than the national average. Handicap ratings are set and modified over as many race results as possible to even out unusually good, or bad, one off results.

Safety

Trailer Yacht Safety Requirements for Racing at Sea.

Each yacht shall have: -

- approved buoyancy aids, in good condition, for all crew to be worn at all times.
- one 600 x 600 or larger orange flag for waving (distress flag)
- a reliable compass.
- one manual bilge pump or one bucket of stout construction with a 9-litre minimum capacity, with a lanyard attached.
- a fire extinguisher with a minimum of 0.9 kg dry powder or equivalent.
- a first aid kit, well stocked.
- an anchor and sufficient chain and warp securely attached.
- an outboard motor with sufficient fuel.
- a transceiver type radio (preferably a marine type VHF)

**Special note: These requirements are the absolute minimum.
Any yacht found not to be meeting these conditions will be disqualified.**

Rescue Boat Requirements.

The rescue boat shall have: -

- a minimum of 2 crew, all of whom shall be wearing approved buoyancy aids.
- sufficient fuel
- the responsibility of conducting the racing at sea and may at any time, change, shorten, abandon the racing if in their opinion the conditions warrant such a measure.

Winter Series Race Management.

A committee of three experienced skippers including the rescue boat driver to decide on race condition suitability taking into account: -

- An up to date weather forecast.
- The bar condition, no yacht shall attempt to cross the bar until notification from the rescue boat deems the conditions suitable.

Club Constitution

Rules of: The Wanganui Sailing Club (Incorporated)

Name:

The name of the Society is The Wanganui Sailing Club (Incorporated) – which trades as Sailing Wanganui - hereinafter referred to as “Sailing Wanganui”.

Objects:

The objects for which Sailing Wanganui is established are -

- a) To conserve, promote and advance generally, boat building and sailing, and to encourage by all means within its power the racing and use of sailing craft, and the provision of ancillary facilities.
- b) To conduct races of sailing craft under the Rules issued by the International Yacht Racing Union and such special provisions as may be required by the Royal Yachting Assn. of Gt. Britain, the New Zealand Yachting Federation, the North Island Western Districts Yachting Assn. and the sailing instructions issued by Sailing Wanganui.
- c) To seek redress of wrongs from which all or any of the Members of Sailing Wanganui may from time to time suffer. To promote or oppose bills legislative, or other measures, or by-laws affecting the interests of Members. Make representations by way of deputations and otherwise arising under the notice of the Government of New Zealand, or of any other Constituted authority, such matters as in the opinion of Sailing Wanganui require attention or alteration.
- d) To use the funds of Sailing Wanganui as the Club may consider necessary or proper in payment of the costs and expenses and furthering or carrying out those objects or any of them, including the employment of Council, solicitors agents, officers and servants as shall appear necessary or expedient.
- e) To subscribe to, or to become a Member of, or cooperate in any other organizations having similar objects.
- f) To acquire or take on lease, any real or personal property and any rights or privileges for the purpose to develop or erect buildings.
- g) Generally, to do all other such things incidental to, or conducive to, the attainment of the above objects.

Membership:

- a) Sailing members shall be of either sex and may be either Senior, Intermediate, or Junior Members, or Life Members as nominated by the General Committee and approved by the A.G.M.
- b) Honorary Members shall be those elected as such by the Committee.
Senior Members shall be 19 years of age or over as of the 1st September each year.
Junior Members shall be those less than 19 years of age as of the 1st September each year.
Associate Members shall be non-sailing Members and shall be elected as such by the Committee because the interest shown by them is deemed to be such as to warrant the right to vote.
- c) Only Senior, Junior and Associate Members are privileged to vote upon any motion before either a Special or an Annual General Meeting.
- d) New Members shall be admitted upon election by the Committee, but no person shall be presented as a candidate for election without any application in writing, signed by himself and two Members, being first lodged in the hands of an Officer of the Club.

- e) Every Member shall on or before opening day in every year and forthwith upon his election to sailing Wanganui, in the case of a new Member pay to Sailing Wanganui such annual subscription as shall from time to time be determined by the Committee.
- f) Every Member shall, in addition to all other monies payable by him, forthwith pay to Sailing Wanganui every sum or sums of money not exceeding in any one case the amount of his annual subscription for the current year, which shall at any time, and from time to time by resolution in general meeting be levied upon him as a Member of Sailing Wanganui, and which shall consider necessary or expedient for the purpose of furthering the interests of Sailing Wanganui or its Members.
- g) Sailing Wanganui may impose upon any Member whose subscription, whether annual or boat storage rent, and other contribution is in arrear and unpaid for the space of one calendar month from the due date thereof, a fine not exceeding 10 per centum of the amount of such arrears, or any other penalty that the Committee may feel fit.
- h) Any Member may resign from his Membership by giving to the Secretary notice in writing to that effect, and every such notice shall take effect as from the end of the financial year then current.
- i) If any Member shall be considered of an indictable offence then such Member shall forthwith cease to be a Member but Sailing Wanganui in its discretion may re-instate him.
- j) Sailing Wanganui may at any time, by letter, invite any Member within a specified time to retire or breach by him of these rules, and in default of withdrawal to submit the question of his expulsion to a General Meeting to be held with 3 calendar months from the date of such letter, and at such meeting a Member whose expulsion is under consideration shall be allowed to offer in explanation verbally and/or in writing, and if thereupon two-thirds of the Members present shall vote for his expulsion he shall forthwith cease to be a Member, providing that voting at any such meeting shall be by ballot if so demanded by not less than five Members.
- k) All Members shall be bound by such Rules as the Committee may from time to time make relating to the property of Sailing Wanganui or to the disposition of the property of Members when that property is on Club premises.

l. Alteration to Rules:

- a) By Notice of Motion these Rules maybe altered, added to, rescinded or otherwise amended by a Resolution passed by a three-fourths majority of those present at a General Meeting of which 7 days' notice has been given.

i. General Meetings:

- a) The Annual General Meeting shall be held either in the month of July or August in every year upon a date and at a time and place fixed by the Commodore, or in his default, absence or inability, by the Committee for the following purposes:
- 1) To receive from the Committee a report, Balance Sheet and Statement of Accounts for the preceding year, and an estimate of the receipts and expenditure of the current year.
 - 2) To appoint Officers of Sailing Wanganui as described in Clause (6) thereof, for the ensuing year.
 - 3) To decide on any items of business duly submitted to the Meeting to be allowed at the discretion of the Chairman.
 - 4) To approve any nomination made by the General Committee for Life Membership.
 - 5) To make recommendations to any of the incoming Committees.
- b) The Commodore, or in his absence or inability, any other Member of the Committee, may at any time for any special purpose, call a Special General Meeting, and he shall do so forthwith

upon the requisition in writing of any eight Members stating the purpose for which the Meeting is required.

c) Seven clear days before either a Special General Meeting, or the Annual General Meeting, a notice thereof and of the business to be transacted together with the copy of the report and balance Sheet, in the case of the A.G.M. shall be sent to every Member and no business other than of which notice has been so given shall be brought forward at such meeting.

d) Every notice required to be given to the Members shall be deemed to have duly delivered if posted to him in a prepaid letter addressed to him at his last known place of business or residence.

e) The Commodore, or in his absence or inability, or any other duly elected Chairman, shall at all General Meetings take the Chair and such Members as are defined in Rule 3 (a), shall be entitled in every motion, to 1 vote exercised in person or in writing and in the case of an equality of votes the Chairman shall have a casting as well as a deliberative vote. Such votes shall be exercised by show of hands, or if the Chairman or 3 Members present shall so request, shall be by ballot.

f) At all General Meetings, 20 Members eligible to vote, shall constitute a quorum.

i. **Management:**

a) At every A.G.M. held, Sailing Wanganui shall elect an Executive Committee of the following Officers, namely: a Commodore, a Vice-Commodore, a Club Captain, a Secretary, a Treasurer, an Auditor, and 5 Committee Members, of whom one may be an Intermediate Member. All of such Officers shall hold office until retirement or removal from office or election of successors to office. The Immediate Past Commodore shall be ex-officio, a Member of the Committee. In addition, also elected by Sailing Wanganui, a Sailing Committee of Members, one of whom may be either an Intermediate or Junior Member.

b) The Executive Committee shall have power to appoint a Member to fill any casual vacancy or to co-opt such additional Committee Members as maybe required until the next A.G.M. and any Member so appointed shall retire at the next A.G.M. together with the rest of the Committee, but all or any of the retiring Committee shall be eligible for re-election on the Committees.

c) The Executive Committee shall at its first meeting following its election at the A.G.M. appoint Starting Box Officials and Rescue Boat Crews.

d) It shall be the duty of the Executive Committee, generally, to conduct the affairs of Sailing Wanganui, to keep usual and proper books of accounts properly posted up, and other records of business of Sailing Wanganui and to notify Members of intended meetings, and the business to be transacted thereat, and to prepare and submit to the A.G.M. a report, Balance Sheet, and Statement of Accounts for the preceding year. Meetings of the Committee shall be held monthly and 5 shall be a quorum.

e) The Sailing Committee, with the Club Captain as Convener shall be responsible for the conduct of all sailing race events held where Sailing Wanganui is advertised as the organizing authority. The Sailing Committee shall conduct itself with due regard to, the "IYRU rules of sailing and race Management", the "Yachting New Zealand Racing Rules of Sailing and Safety Regulations". Modifications required due to local procedure and conditions shall be published in the form of The Sailing Instructions, which shall be published and made available to all members.

f) The Sailing Committee shall each year before the AGM prepare a draft sailing program for ratification by the Incoming Sailing Committee and General Committee.

g) The Sailing Committee will receive their basic recommendations from the A.G.M. Any variations to policy, or expenditure any must be approved by the General Committee.

(h) Strategic Committee. The Strategic Committee shall be chaired by the Patron whom has the power to elect whoever he feels is suitable, and is in the club's best interest, members to that committee.

Finance:

- a) All monies received by, or on behalf of Sailing Wanganui, shall forthwith be paid to its credit in an account with a bank from time to time to be fixed by Sailing Wanganui, and all cheques or withdrawal slips drawn on the accounts shall be signed by two of either the Treasurer, Secretary or nominated Committee member provided always that resolutions authorizing the disbursement of monies have been passed by the Committee.
- b) The Committee may, from time to time, invest and re-invest in such securities and upon such terms as it shall think fit, the whole or any part of Sailing Wanganui's funds which shall not be required for the Club's immediate business.
- c) Sailing Wanganui shall, in addition to the other powers vested in it, have a power to borrow or raise money from time to time by the issue of debentures, bonds, mortgages, or any other security funded or based on all or any of the property and/or rights of Sailing Wanganui, or without any such security and upon such terms as to priority and otherwise as Sailing Wanganui shall think fit, but the powers of so borrowing or raising money shall not be exercised except pursuant to a resolution of the Club passed in general meeting.

Dissolution:

In the event of Sailing Wanganui being wound up, the surplus assets after payment of Sailing Wanganui's liabilities and the expenses of winding up, shall be paid, disposed of or distributed to such charitable organizations whose objects are similar to those described under Clause 2 (Objects) in such shares and in such manner as shall be determined by the Members of Sailing Wanganui at, or before, the time of dissolution.

9. Interpretation:

In the event of any dispute arising in any interpretation of these rules, the Committee's decision shall be final.

10. Badge and Colours:

The Club's operational logo will be a design as agreed by the Committee.

The Club's colours to be white and blue.

Sailing Wanganui badge to be a design held by the Secretary